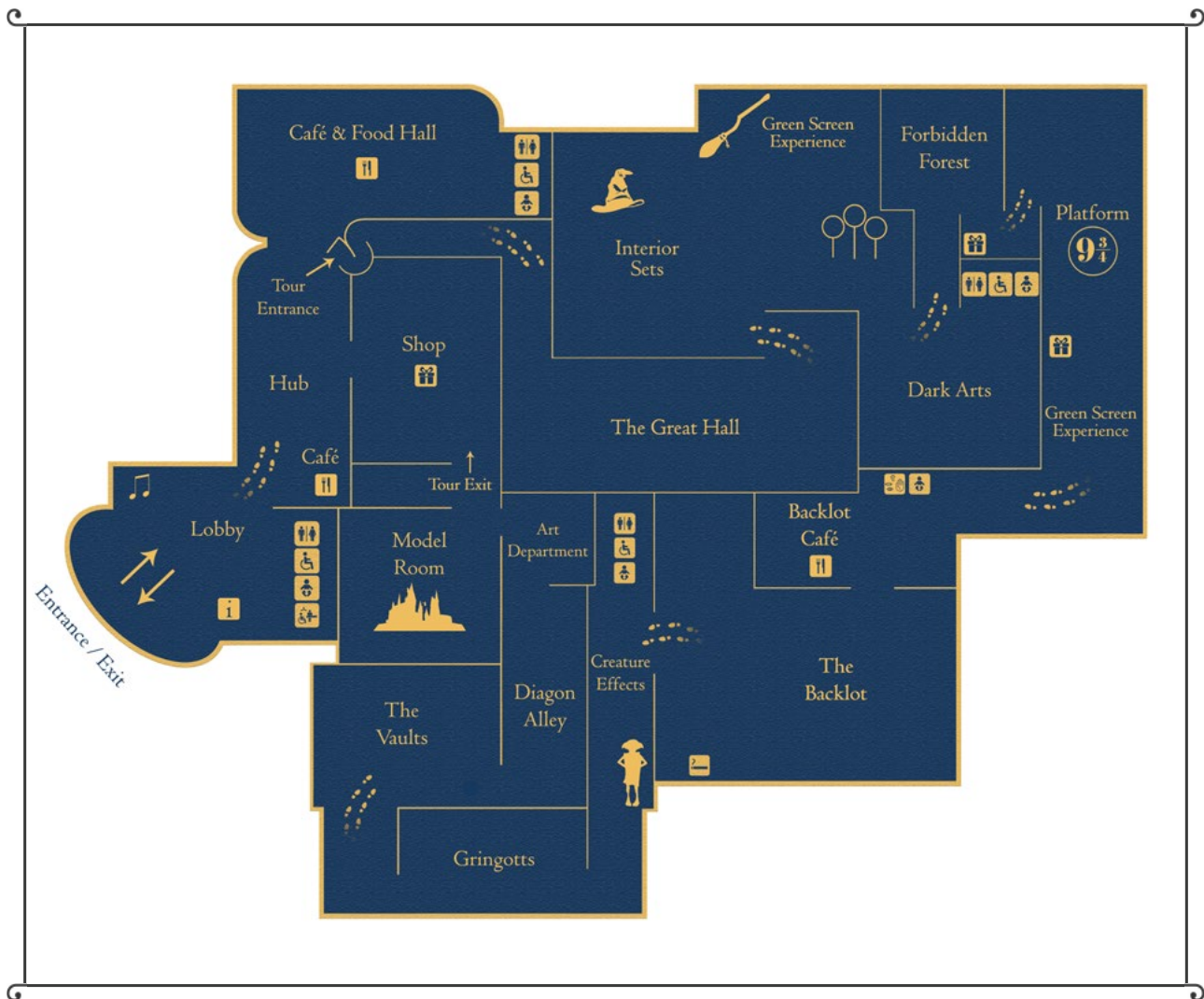


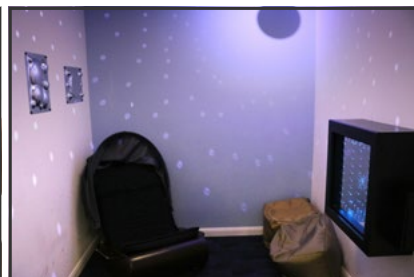
## AUTISM GUIDE

For carers of visitors with Autism, please see our [Accessibility Guide](#)

### A FEW THINGS TO KNOW BEFORE YOUR VISIT

The Studio Tour is laid out as follows:



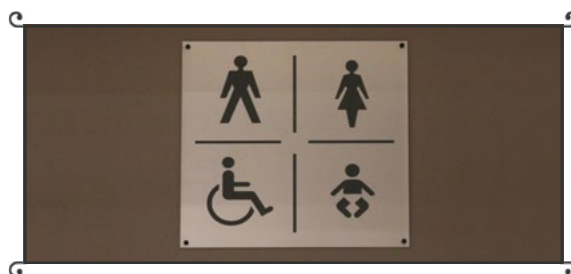


- The floor and lighting levels change in certain areas, and sometimes can get busy.
- Just speak to a member of staff if you need help, they will be in uniform.

- Sometimes it can be noisy. We have ear defenders you can use in our cinema.
- The Studio Tour has a Sensory Room and Sensory Chair, which can be used as a quiet space. Please ask one of our staff members to escort you if required.



- Hidden Disability Lanyards are available to collect from the Ticket Windows or Information Desk on arrival.



- There are toilets throughout the tour: in the Lobby, Food Hall, next to the Forbidden Forest and just before the Creature Effects room. Just look out for the signs.
- Dyson hand dryers are used. They may make a loud noise.



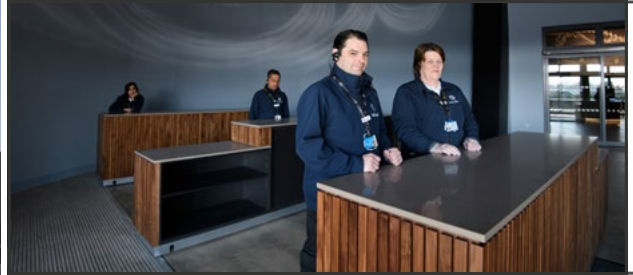
- You can complete a Passport as you go through the Studio Tour - look out for the stamp stations and the Golden Snitches™.

- During our special events there may be additional areas added to the Studio

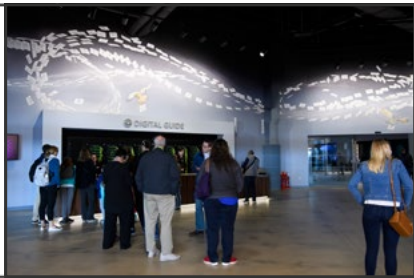


# THE MAKING OF Harry Potter

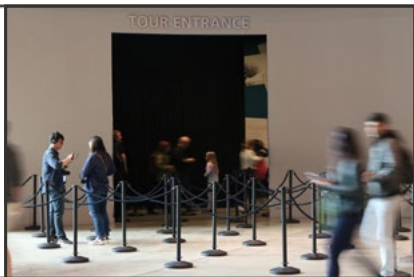
## YOUR JOURNEY GUIDE THROUGH WARNER BROS. STUDIO TOUR LONDON - THE MAKING OF HARRY POTTER



- Cars, buses and coaches bring people to the Studio Tour.
- There are 3 chess pieces outside.
- You may need to collect tickets from our ticket window.
- You will walk through security where your bag may be searched and they may use a personal metal detector to check your clothing.
- There may be a short queue here.



- You will enter our Lobby. Here you will find our Information Desk and Cloakroom. Digital Guides can also be purchased or collected here.
- Ask a member of staff to pick up your activity book – the Passport.
- Through the sliding doors you will enter our Hub. There is music playing in this area and you may hear spells being cast or fireworks - look closely the images also change.
- There is a Ukrainian Ironbelly Dragon above the carpet. Remember she is not real.
- It could be quite busy and noisy.
- On the far right is the entrance to the Studio Tour. You may have to wait in a queue.



- Through the Entrance Corridor there are photo opportunities and you will get to see the Cupboard Under the Stairs.

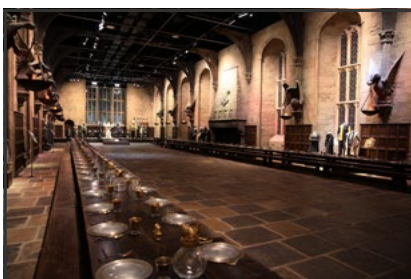
- You will hear music playing and the lighting is low throughout this section.
- You will then enter our pre-hold area.
- Visitors gather in here before they enter the first part of our guided sequence.

- It may be crowded and a little loud throughout our Entrance Corridor. If you do not feel comfortable please speak to a staff member placed throughout. They will be happy to help.



- You will enter the Holding Room, which can fit up to 150 people standing. It may be a bit loud in here.
- There is a screen opposite you with portraits on. The doors behind you will close, the portraits will start talking and the lights will dim.
- A staff member will interact with the portraits and introduce you to the Studio Tour. Watch out for a few recognisable faces.
- The doors will open in front of you at the end of the introduction.

- Next you will be led into our Cinema.
- The lights will turn off when everyone is in their seat.
- Another short film will play. Daniel, Rupert and Emma (Harry, Ron and Hermione) will appear on screen and welcome you to the tour.
- At the end of the film the screen lifts to reveal the next part of the tour.



- You will see the doors to the Great Hall appear.
- An Interactor will welcome you to Hogwarts™ and open the doors.

- It may be crowded as you walk in.
- You will need to leave the Great Hall when asked but you can go back in once the next group has entered.

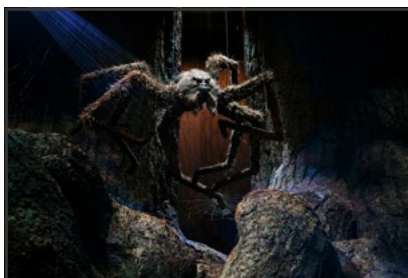
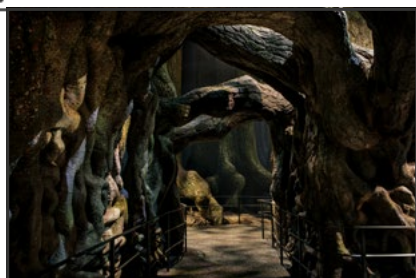


- Next is the Big Room.
- You will see the Gryffindor™ Common Room, Dumbledore's Office, the Potions Class and Hagrid's™ Hut among other sets.

- Sometimes there are a lot of visitors walking around this area.
- You will not get to go past the barriers.



- Next you will see more sets including the Weasley's Kitchen and Malfoy Manor.
- See if you can spot the Whomping Willow move or Mrs Weasley's knitting needles.
- You can also learn wand combat here. A man will appear on screen and show you some moves.
- There may be a queue.



- Welcome to the Forbidden Forest.
- Strobe lighting effects are used in this area to create thunder and lightning.
- There is a spongy floor through the Forbidden Forest.
- Buckbeak™ may bow as you walk past.
- Go left if you want to see Aragog or right to avoid the animatronic spiders. Remember they are not real.
- The spiders move but they will not get near you.
- There is a shop at the end of the Forbidden Forest.



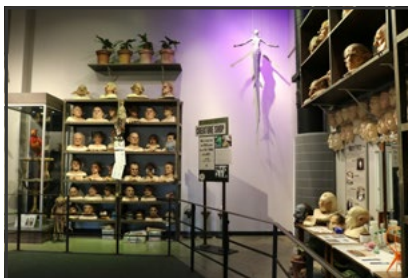
- Next is the Hogwarts Express™ on Platform 9 3/4™.
- The train will not move but it does whistle and blow smoke sometimes
- There is an accessible carriage at the end of the *Hogwarts Express*.
- You can have your photo taken in an interactive carriage.
- Look out the green screen window as the *Hogwarts Express* travels to *Hogwarts*.
- You might see a Chocolate Frog or a Dementor on the screen. Your seat may vibrate a little.
- There is also a shop on *Platform 9 3/4*.



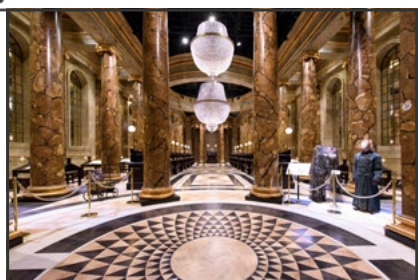
- You are now over halfway through the Studio Tour.
- The next room is our Backlot Café. Where you can get *Butterbeer* and *Butterbeer* ice-cream.
- It may be noisy when busy, and there may be a queue for food and drink.
- If you do not want to eat you can go straight through to our Backlot.



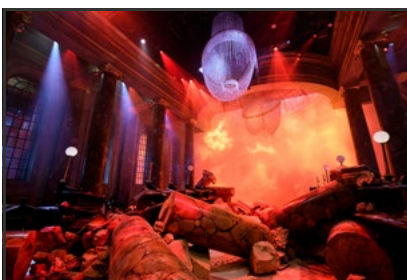
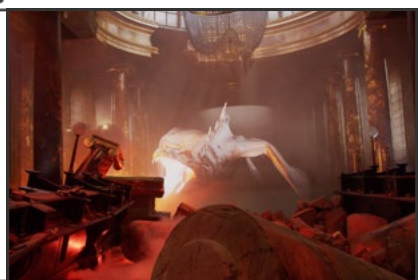
- Next is the Backlot. This area is outside – so you may want to bring your coat if it is cold.
- If you have brought your own picnic you can eat it in the Backlot.
- Here you can walk across the *Hogwarts* Bridge or you can sit on *Hagrid's* motorbike.
- You can also see No. 4 Privet Drive and the Knight Bus™ among other sets.
- There is a bell on the *Knight Bus*.



- Next you go back inside to visit the Creature Effects Department.
- Here you will see masks and animatronics of the animals and goblins from Harry Potter™ film series.
- Some of them move and there is a film telling you about how they were made.
- Look out for Dobby™, *Buckbeak*, the Mandrake and Aragog.
- You can also make *Dobby* move on the screen - just stand on the black square.



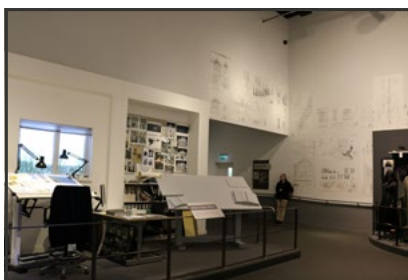
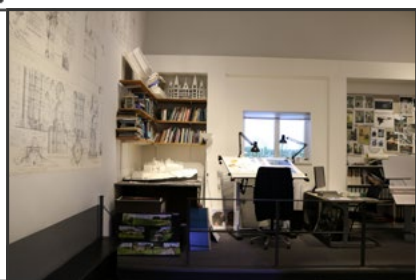
- Continuing from the Creature Effects Department you will enter the Gallery of Goblins on your way to Gringotts Wizarding Bank.
- There is a blue lighting effect in the Gallery of Goblins.
- Gringotts Wizarding Bank has a marble floor.
- Look out for the Goblin models counting the Galleons.
- After Gringotts Wizarding Bank you will enter a dimly lit area. You will get to see the Vault cart and even a few treasures in this section.
- There is a photo opportunity here.
- Music plays throughout this section and it can get quite noisy. You may even hear some thudding from next door.



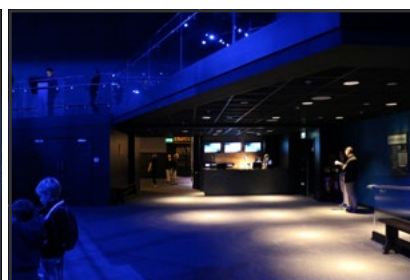
- Next you will visit Destroyed Gringotts.
- It may be loud in here and possibly a little scary. It is important to know that none of the creatures at the Studio Tour are real.
- It can be smoky in here and there are fire and wind effects used. The lighting may change to red.
- If you are frightened, you can walk straight through the door opposite you and into Diagon Alley™.



- Next is *Diagon Alley*. The pavement is cobbled here and on an incline, and you will not be able to enter the shops.
- Look out for Gringotts Wizarding Bank and Weasley's Wizarding Wheezes.



- After *Diagon Alley* you enter the Art Department.
- Here you see sketches, paintings and white card models of your favourite *Harry Potter* sets and characters.
- This area can get busy.



- You are nearly at the end now. The next stop is the *Hogwarts* Model.
- You will make your way around the model on a downward slope.
- The lights may change from light to dark and music will be playing in this section.
- There are touch screens around the model that show you how it was made.



- Next is the Wand Room.
- It looks like Olivander's and displays more than 4000 wand boxes with names of the cast and crew who worked on the *Harry Potter* film series.
- And finally you will pass through the Studio Shop, where it can sometimes get noisy and crowded.
- You will exit through the Hub and Lobby, where the Studio Tour finishes.

We hope you enjoy your visit to Warner Bros. Studio Tour London – The Making of Harry Potter.

We look forward to meeting you.



[WBSTUDIOTOUR.CO.UK/ADDITIONAL-NEEDS](http://WBSTUDIOTOUR.CO.UK/ADDITIONAL-NEEDS)