



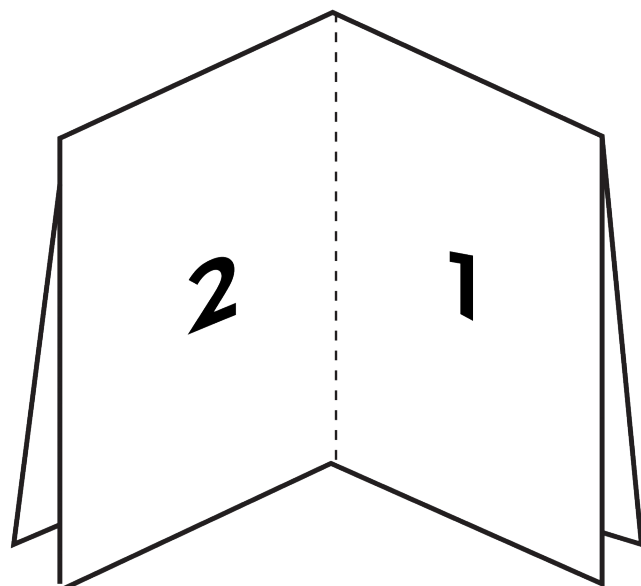
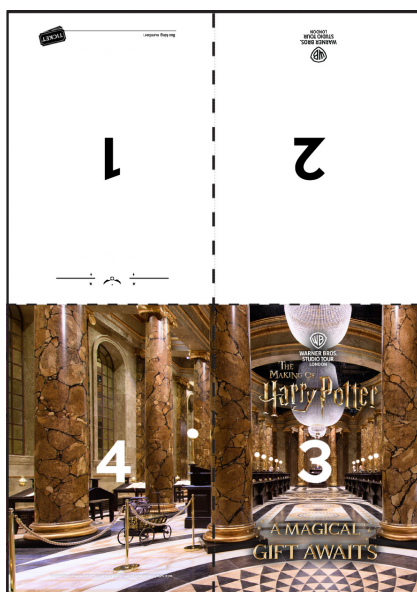
Card Printing guide

Please follow the instructions listed below to print out your card.

1. Print page 2 only of this PDF document
2. Set the page size to A4
3. Set the sizing to "Original size" or "Actual size" and the orientation to portrait.
4. Print and ensure that none of the content has been cropped from the sides.

In the event that the content is cropped repeat previous steps using "Fit to Page" as the sizing option.

5. Fold the card along the dotted lines using the guide below:



TICKET

Booking number: _____

